



# Introducing IoTah-PS®

Advanced Power Studies for Optimal Fleet Performance.

**SCHEDULE A DEMO TODAY!**



## Empower Your Fleet with Smart Technology

Unlock your electric forklift fleet's full potential with IoTah-PS®. This smart fleet management solution is designed to improve utilization and performance through advanced power studies. IoTah-PS® provides actionable insights that can transform how you manage your operations.



**EFFORTLESS INSTALLATION**



**CELLULAR WIRELESS CONNECTIVITY**

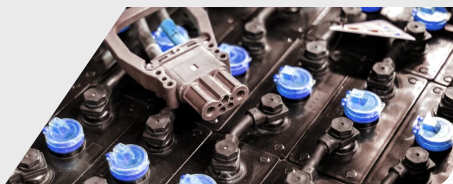


**NO MONTHLY FEES FOR 5 YEARS**

### Features at a Glance:

#### Right Size Your Batteries

Ensure optimal battery selection for fleet efficiency and longevity.



#### Optimize Charging Regimens

Customize charging methods to fit your fleet operational needs and maximize uptime.



#### Fleet Right-Sizing

Analyze usage to align fleet size with actual needs, reducing overhead and increasing efficiency.



# Why IoTah-PS®?



## Rapid Installation and Easy Setup

Get up and running quickly with minimal disruption, thanks to user-friendly mobile setup.



## Advanced Data Analytics

Turn data into decisions with sophisticated reporting tools.



## Pin Forklift Location

Location pinning for better asset management and streamlined operations.



## Battery Performance Monitoring

Analyze battery usage patterns, including charge/discharge levels and voltages, to identify failures and extend battery life.



## Continuous Wireless Data Access

Seamless cellular connectivity ensures real-time insights without manual intervention.



## Cloud-Based Configuration

Manage and reset power studies effortlessly via the IoTah cloud app, with all data securely stored and readily accessible.

## IoTah-PS® Capabilities

Logs & stores all truck operational data

- ✓ In-use and idle times / cycles
- ✓ In-use Ahrs, kWhrs, EBUs
- ✓ Lift vs travel time
- ✓ Shift and daily usage data
- ✓ In-use battery voltages and SOCs

DAILY AVERAGE TRUCK HOURS

